

# Junior College Night

## Demystifying the College Process





# Who We Are/What We Do





# College Counseling News for the Class of 2022

An aerial photograph of a university campus. In the center is a large, multi-story brick building with a prominent clock tower. The campus is surrounded by green lawns and trees with autumn foliage. In the background, there are rolling hills and mountains under a clear sky.

Applied to 528  
institutions – attending  
179 different campuses

6 attending international  
colleges

Applied to an  
average of 6 colleges

30 competing in collegiate  
level athletics



# More Applications=Better Chance



# Top 10 Schools for the Class of 2022



# “To-Do” Timeline

- Make Appointment with Mr. Klasen or Ms. Lepage
- Research Colleges
- Visit Campuses
- Register for ACT and/or SAT

- Narrow your list of colleges that you are applying to
- Fill out the FAFSA
- Work on Essays

- Meet with Counselor to discuss post secondary plans

Junior  
Year

Senior  
Year

Jan

Feb

Mar

Apr

May

June

July

Aug

Sept

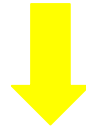
Oct

Nov



# College Counseling Appointments

Our philosophy is to help guide our students in their journey to find the right fit. In guiding our students to find the right fit we value helping our students to find their voice.



## College Appointments

Beginning in December of a student's junior year, students and parents may **schedule appointments** with one of our college counselors. Our counselors are also available for either first time meetings with Seniors or follow up meetings with students and parents for a more in depth discussion about a student's list of schools and finding the right fit for them.

## Programs and Activities

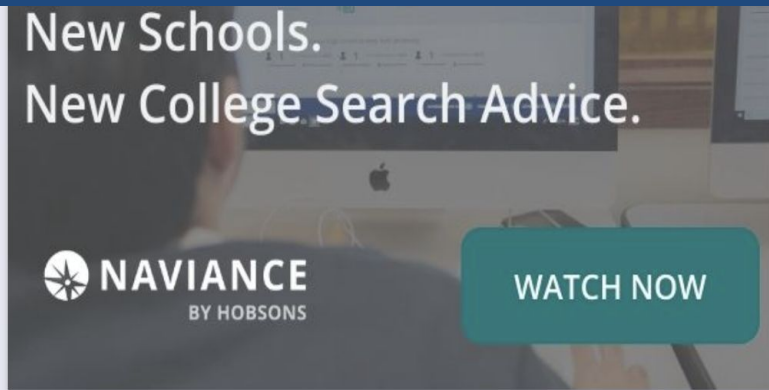
- + **Senior Information**
- + **Senior Programs**
- + **Junior Programs**
- + **Sophomore Programs**

## College Information

- + **College Visits**
- + **Community College**
- + **College Application Procedures**
- + **Senior College Counseling Appointments**



# College Counseling Appointments



Resources to get ready

 Document Resources

## From My School

### LINKS

[College Appointment](#) 

[FAFSA](#) 

[ACT](#) 

[SAT](#) 



### PAGES

Your school has no new pages. Check back later.

### UPDATES

Your school has no new updates. Check back later.



# Upcoming Programs

- Junior Registration Meetings - January
- Gap Fair at New Trier - January 28 (12pm-3pm)
- College Colloquium - Feb. 25 (10:00am-2:30pm)
- College Fair @ GBN - April 13 (6:30pm-8:30pm)
- College Essay Writing Workshop - June
- Common Application Workshop - August
- Senior Individual Meetings - September
- Senior College Night - September
- Senior College Finance Night - October
- FAFSA Completion Workshop - October

# Naviance Scattergram

Marquette University ❤️

Communicate ▾

Apply online

Learn Mo

Overview

Studies

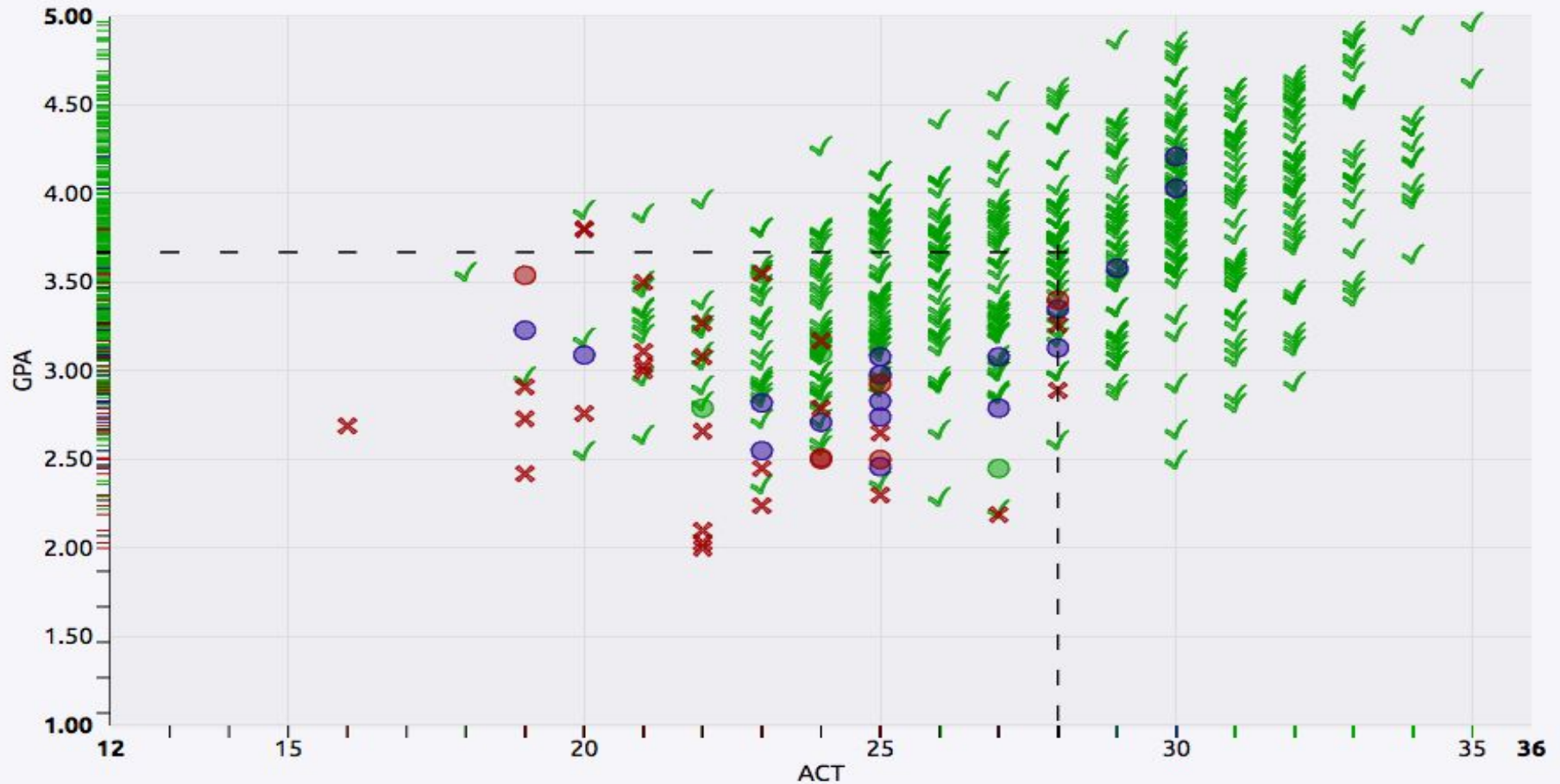
Student Life

Admissions

Costs

Profile

Comparing Weighted GPA with ACT





# Naviance Scattergram

University of Wisconsin-Madison ❤️

Communications

Overview

Studies

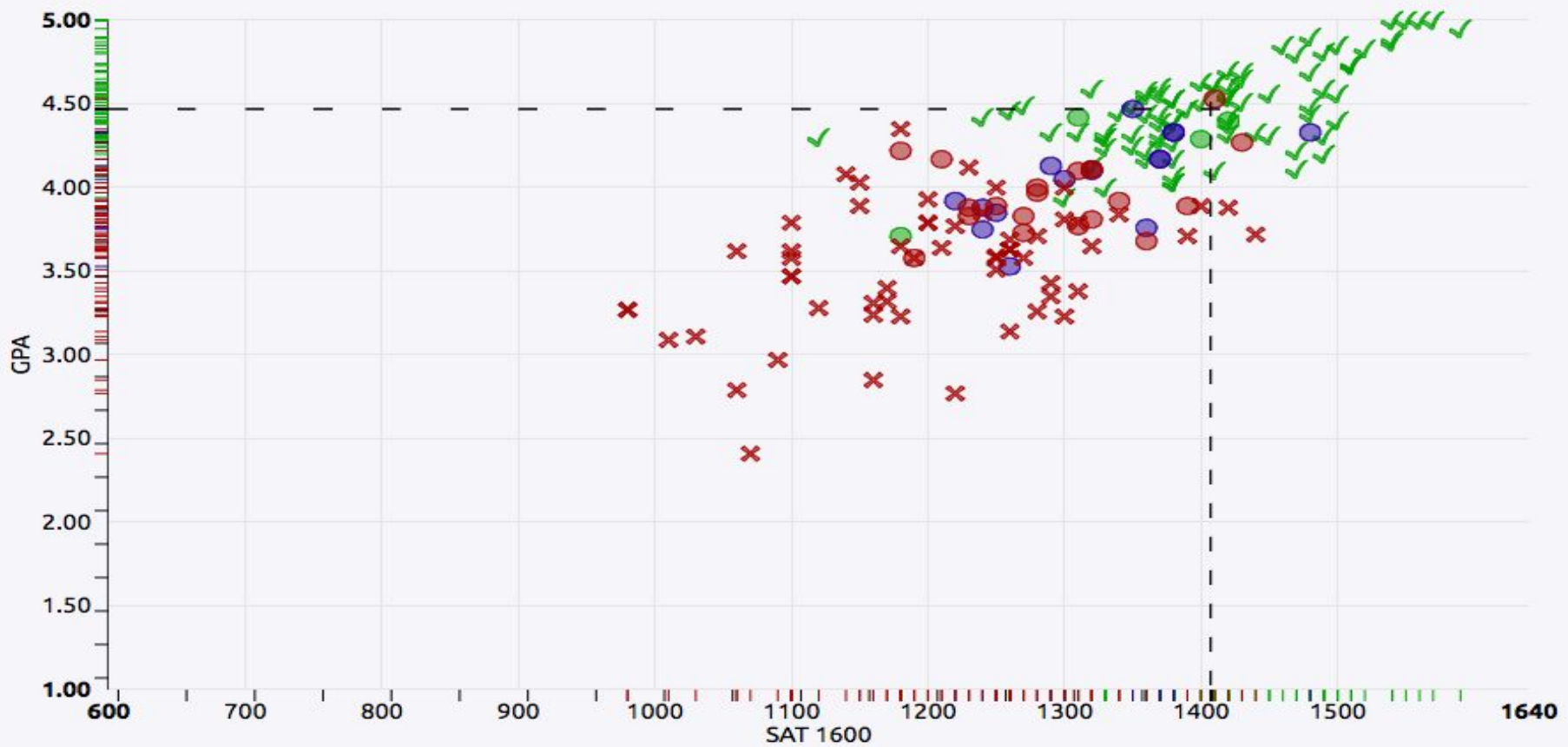
Student Life

Admissions

Costs

Scattergrams | Applications for Glenbrook South High School ⓘ

Comparing Weighted GPA with SAT (1600 Scale) ⌵



# Naviance Scattergram

Vanderbilt University 

[Virtual Tour](#)

[Communicate ▾](#)

[Apply Online](#)

[Learn More ▾](#)

[Overview](#)

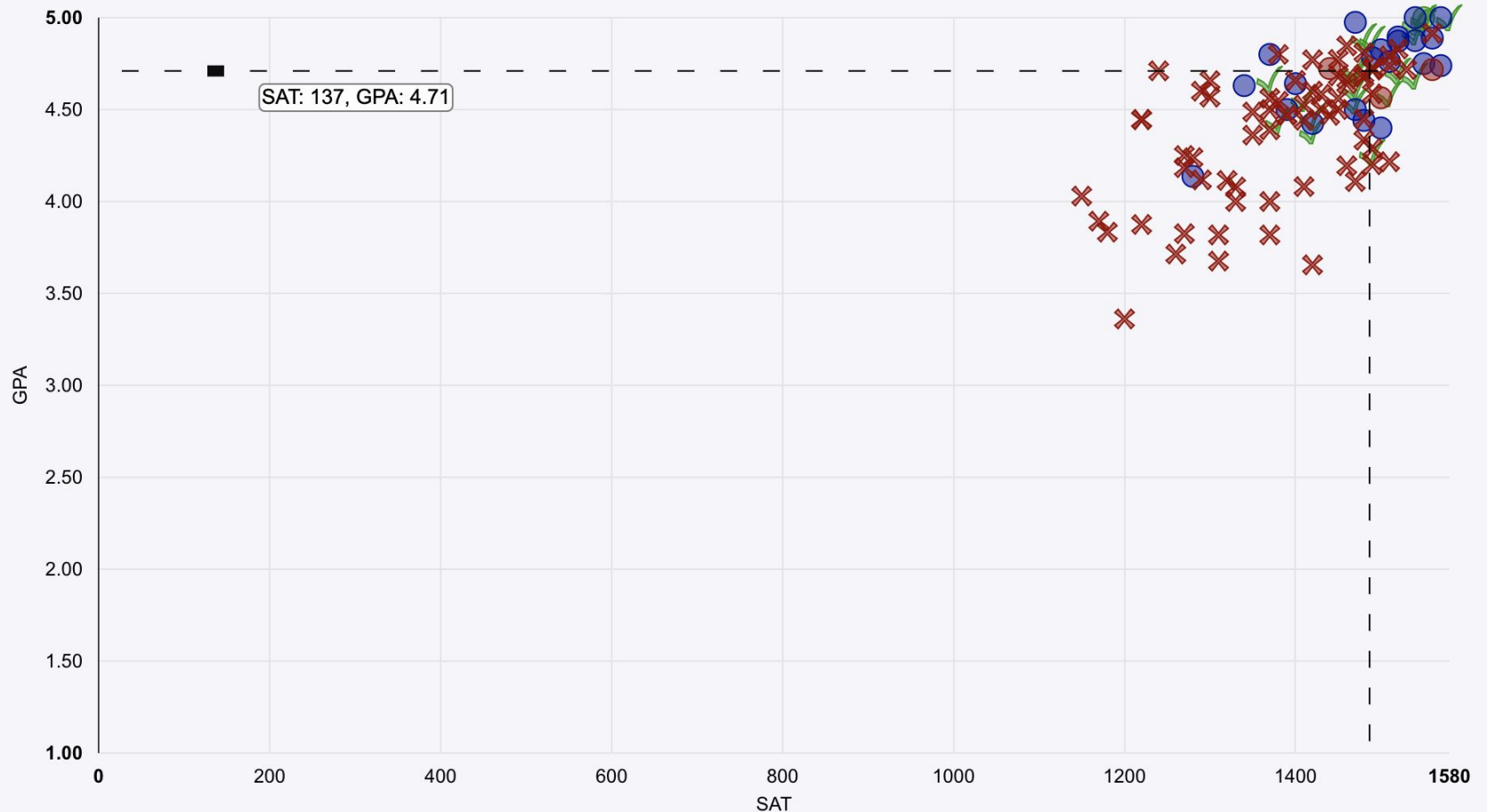
[Studies](#)

[Student Life](#)

[Admissions](#)

[Costs](#)

**Comparing** Weighted GPA **with** SAT (1600) ▾





# Naviance College List

Tommy Titan Class of 2022



General Plan Scores Assessments Colleges eDocs Resume Scholarships Journal Documents Careers Success Plan Post-grad

[active applications](#) [milestones](#) [history](#) [graphs](#) [prospective colleges](#) [comparison](#) [event registrations](#)

PROSPECTIVE COLLEGES

[add](#)

[Print summary](#) | [Print detail](#)

<input type="checkbox"/> all	Date Added	Added By	College	Delivery Type	Interest	Expect
<input type="checkbox"/>	10/02/2018	student	Colgate Univ		N/A	N/A
<input type="checkbox"/>	11/29/2018	counselor	U of Dayton		N/A	N/A
<input type="checkbox"/>	11/29/2018	counselor	Denison Univ		N/A	N/A
<input type="checkbox"/>	11/29/2018	counselor	Marquette Univ		N/A	N/A
<input type="checkbox"/>	11/29/2018	counselor	U of Texas Austin		N/A	N/A
<input type="checkbox"/>	11/29/2018	counselor	U of Wisconsin Madison		N/A	N/A

Select apps and:

# Additional Online Resources

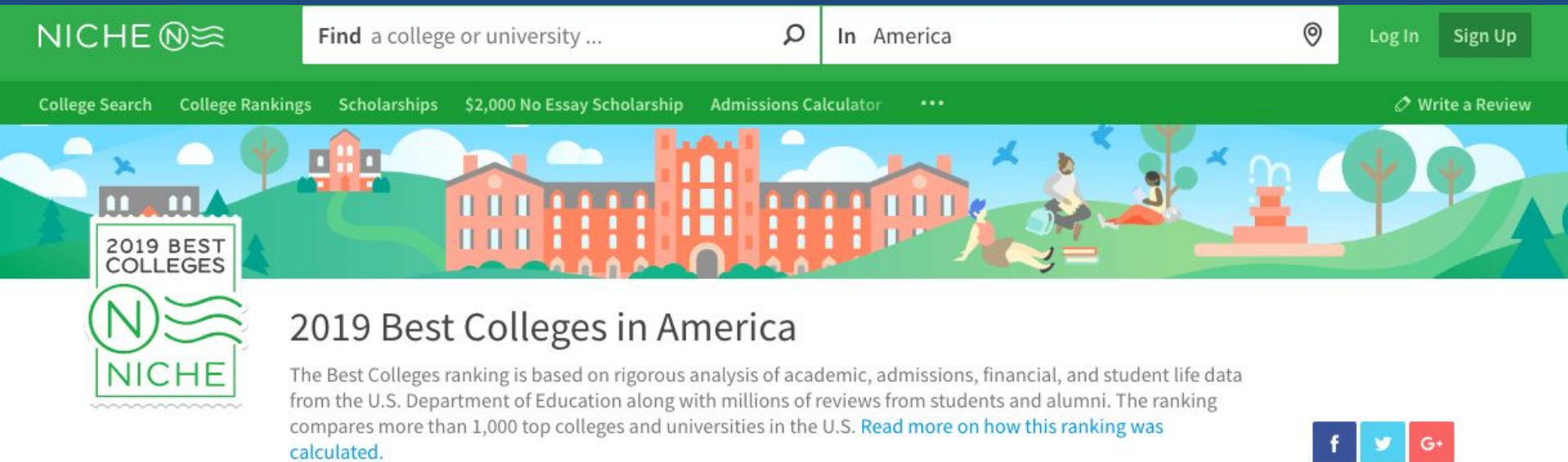
College ScoreCard

College Board -Big Future

College Niche

Compass Education Group

College Transitions -DataVerse



The screenshot shows the Niche website interface. At the top is a green navigation bar with the Niche logo on the left, a search bar with the placeholder text "Find a college or university ..." and a magnifying glass icon, and a location selector set to "In America" with a location pin icon. To the right of the search bar are "Log In" and "Sign Up" buttons. Below the navigation bar is a green horizontal menu with links for "College Search", "College Rankings", "Scholarships", "\$2,000 No Essay Scholarship", "Admissions Calculator", and a "Write a Review" button with a pencil icon. The main banner features a colorful illustration of a college campus with red brick buildings, green hills, trees, and students. On the left side of the banner is a badge that reads "2019 BEST COLLEGES" and "NICHE".

NICHE

Find a college or university ...

In America

Log In Sign Up

College Search College Rankings Scholarships \$2,000 No Essay Scholarship Admissions Calculator ... Write a Review

2019 BEST COLLEGES  
NICHE

## 2019 Best Colleges in America

The Best Colleges ranking is based on rigorous analysis of academic, admissions, financial, and student life data from the U.S. Department of Education along with millions of reviews from students and alumni. The ranking compares more than 1,000 top colleges and universities in the U.S. [Read more on how this ranking was calculated.](#)

f t G+

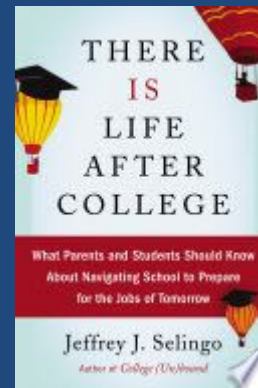
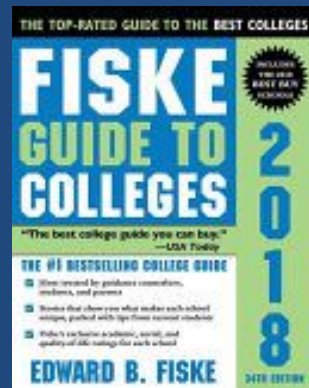
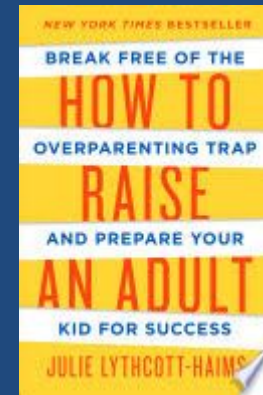
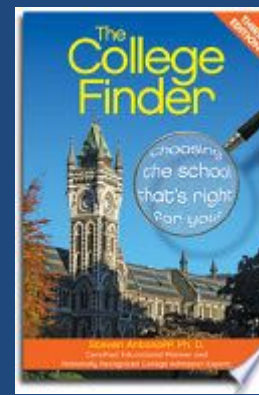
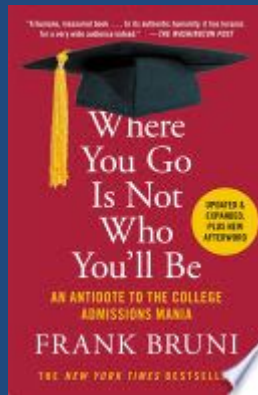


# Additional Financial Aid Resources

Fafsa.gov  
Naviance  
Fastweb.com  
Cappex.com  
Chegg.com  
Goingmerry.com



# Favorite College Books





# What Are Colleges Looking For?

- High school grades
- Challenging curriculum
- Test scores
- Demonstrated interest
- Essay/Writing sample
- Letters of recommendation
- Extracurricular activities/talent



# NACAC Admission Trends Survey

TOP FACTORS IN ADMISSION DECISIONS: FIRST-TIME FRESHMEN, FALL 2017

Factor	N	Considerable Importance	Moderate Importance	Limited Importance	No Importance
Grades in All Courses	220	74.5	15.0	5.5	5.0
Grades in College Prep Courses	220	73.2	16.8	5.9	4.1
Strength of Curriculum	219	62.1	21.9	8.7	7.3
Admission Test Scores (SAT, ACT)	221	45.7	37.1	12.2	5.0
Essay or Writing Sample	220	23.2	33.2	24.1	19.5
Student's Demonstrated Interest	218	16.1	23.9	28.0	32.1
Counselor Recommendation	218	15.1	40.4	26.6	17.9
Teacher Recommendation	219	14.2	40.2	26.5	19.2
Class Rank	220	9.1	29.1	34.1	27.7
Extracurricular Activities	219	6.4	42.9	32.0	18.7
Portfolio	219	6.4	11.9	26.9	54.8
Subject Test Scores (AP, IB)	219	5.5	18.3	35.2	41.1
Interview	219	5.5	16.4	28.3	49.8
Work	217	4.1	28.6	36.9	30.4
State Graduation Exam Scores	218	2.3	8.7	18.8	70.2
SAT II Scores	216	1.9	5.6	14.8	77.8

SOURCE: NACAC Admission Trends Survey, 2018–19.



# Testing Information

- Students may take the ACT or SAT more than once
- Colleges will take the best scores the student submits
- It is the student's responsibility to request official test scores from ACT/SAT
- Test optional/Self reporting scores



# Test Optional

Applied TO: 44%  
Admitted TO: 40%  
Enrolled TO: 42%

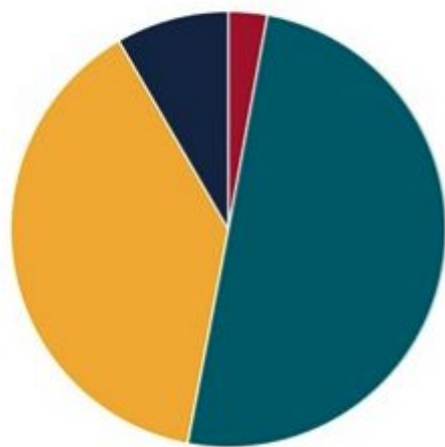
UIUC First Choice Admit Rate by Core Academic GPA  
(Score Senders v. Non-Score Senders)



# Mass Adoption of TO

## *Class of 2021*

Sample includes 416 US colleges and universities that are widely recognized nationally, including all institutions that are moderately to highly selective\*



Testing Policy	#	%
SAT/ACT Required	12	2.9%
Test Optional–1 year trial	140	33.6%
Test Optional–multiyear trial	69	16.5%
Test Optional–permanent	161	38.6%
Test Free	35	8.4%

\*Source: [compassprep.com/college-profiles](https://compassprep.com/college-profiles)



# Which Test Is Right For Your Student?



# Testing Schedule

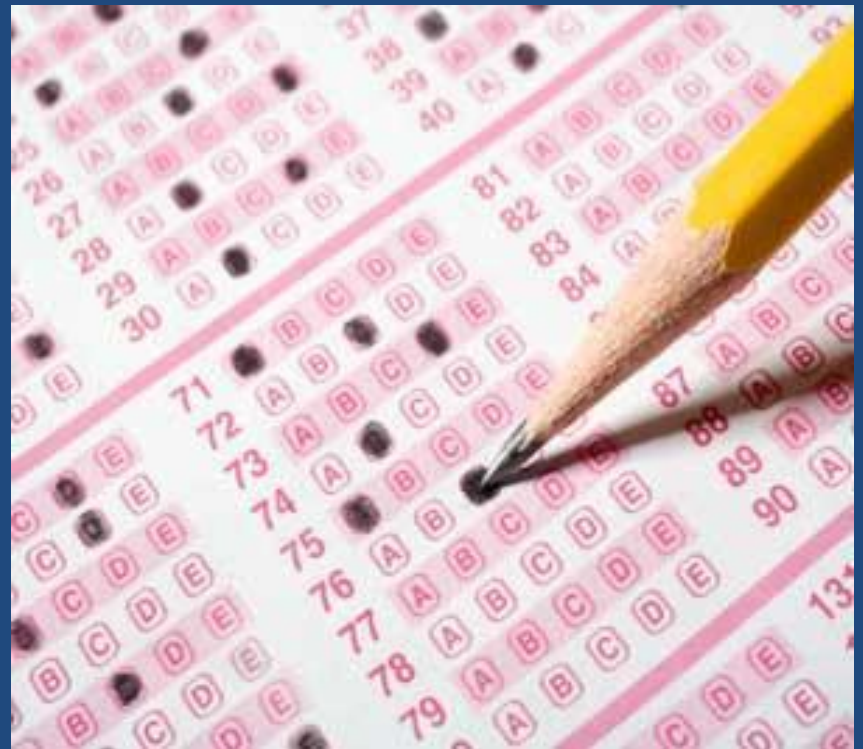


- February 11
- April 15
- June 10\*
- July 15
- September 9\*
- October 21
- March 11
- April 12 (State Test)\*
- May 6
- June 3\*
- August 26
- October 1

\*GBS is a test site

# Test Prep

- Glenbrook Courses
  - SAT begins January 17
  - ACT begins February 2
- Khan Academy
  - Free Online SAT Prep
- ACT Academy
  - Free Online ACT Prep

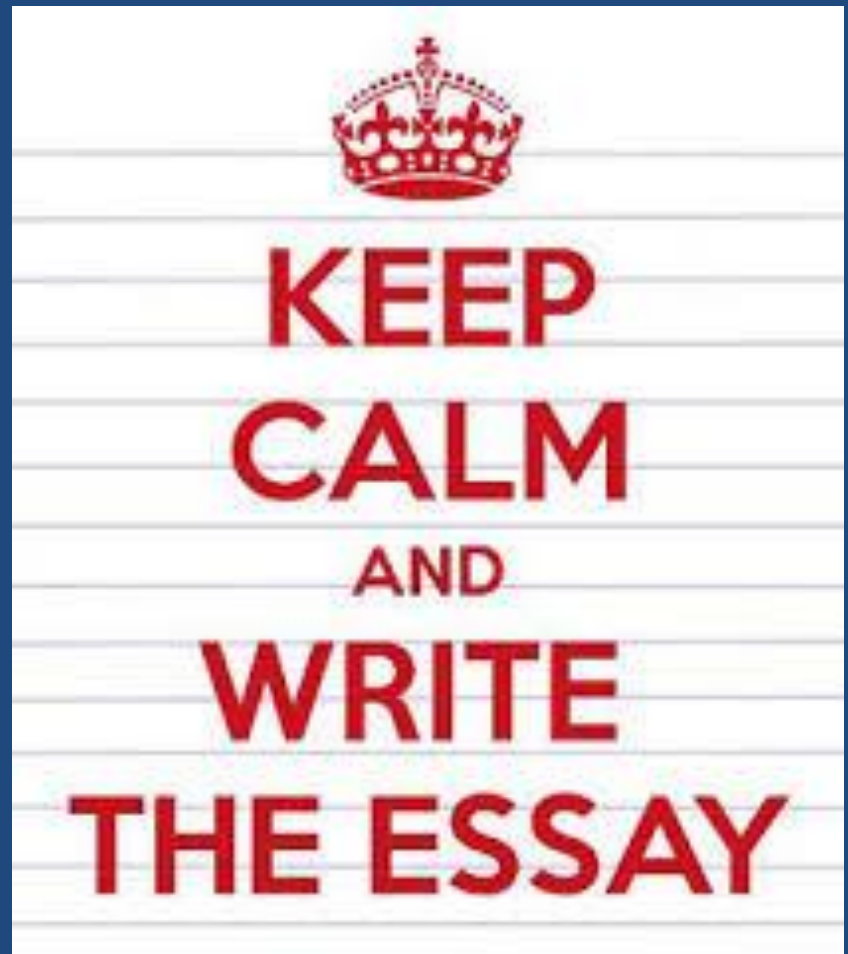




# The Essay

## Beyond the Numbers and Statistics

- Sample of the student's writing
- Student steps off the page
- Insight into what makes you tick
- Essay writing workshop offered in June and the Senior English classes
- College Essay Tutors in TLC



# Personal Statement and Supplemental Essays

The essay demonstrates your ability to write clearly and concisely on a selected topic and helps you distinguish yourself in your own voice. What do you want the readers of your application to know about you apart from courses, grades, and test scores? Choose the option that best helps you answer that question and write an essay of no more than 650 words, using the prompt to inspire and structure your response. Remember: 650 words is your limit, not your goal. Use the full range if you need it, but don't feel obligated to do so. (The application won't accept a response shorter than 250 words.)

- ☐ Some students have a background, identity, interest, or talent that is so meaningful they believe their application would be incomplete without it. If this sounds like you, then please share your story.
- ☒ The lessons we take from obstacles we encounter can be fundamental to later success. Recount a time when you faced a challenge, setback, or failure. How did it affect you, and what did you learn from the experience?
- ☐ Reflect on a time when you questioned or challenged a belief or idea. What prompted your thinking? What was the outcome?
- ☐ Reflect on something that someone has done for you that has made you happy or thankful in a surprising way. How has this gratitude affected or motivated you?
- ☐ Discuss an accomplishment, event, or realization that sparked a period of personal growth and a new understanding of yourself or others.
- ☐ Describe a topic, idea, or concept you find so engaging that it makes you lose all track of time. Why does it captivate you? What or who do you turn to when you want to learn more?
- ☐ Share an essay on any topic of your choice. It can be one you've already written, one that responds to a different prompt, or one of your own design.

## "Why Northwestern" Statement :

While other parts of your application give us a sense of who you are, we are also excited to hear more about how you see yourself engaging with the larger Northwestern community.

In 300 words or less, help us understand how you might engage specific resources, opportunities, and/or communities here. We are curious about *what* these specifics are, as well as *how* they may enrich your time at Northwestern and beyond.

Do you plan to complete the "Why Northwestern" Statement? (We strongly encourage a response, as your answer will help us connect the dots across your application to imagine what kind of college student you might become.)\*

# Everyone Likes Free

College Essay Guy®

[ABOUT](#) [STUDENTS](#) [COUNSELORS](#) [ONE-ON-ONE](#) [FREE RESOURCES](#) [BLOG](#) [PODCAST](#) [LOG IN](#) [CONTACT](#)

## The Free Stuff

FREE COLLEGE ESSAY RESOURCES FOR STUDENTS, PARENTS, AND COUNSELORS





# Teacher vs. Counselor Letters of Recommendation

- Teachers offer a perspective about student within the context of the class
- Counselors offer perspective from a more “global” viewpoint of what the student has contributed to GBS/community/work
- Student should ask teachers who “know” them well, not just teachers who “grade” them well
- Teacher recommendation should be from 1 of 5 academic subjects



# Extracurricular Activities

## The Why vs. the What

“Colleges are much less concerned with what students do than why they do it. We’re not wowed by the event but what it meant to you, what you learned about yourself.”

*Jim Bock, Swarthmore Dean of Admissions*



# Demonstrated Interest





## COLORADO COLLEGE

FALL 2018	APPLICATIONS	ADMITS	ADMIT %	COMMITTS	YIELD %
ED I Applications	705	246	34.9%	235*	96%
ED II Applications	467	56	12%	47*	84%
Combined ED I/ED II	1172	302	25.7%	282	93.4%
EA Applications	3487	640	18.3%	136	21.2%
RD Applications	3896	172	4.4%	38	22%
Other: Gap/Defer/WL	-	170	-	90	-
TOTAL Applications	8555	1284	15%	546	42.5%



COLORADO  
COLLEGE

## Is there an advantage/benefit to applying Early Decision?

---

Yes. Early Decision applicants are part of a much smaller pool of candidates. During the 2020-21 admission cycle, Boston College received 3,225 Early Decision applications (ED I and II combined). 39% of ED applicants were admitted, filling 48% of the Class of 2025. During Regular Decision, the remaining 52% of the class was filled from an applicant pool of nearly 37,000 applications. The admit rate for Regular Decision applicants was 17%.

Because Early Decision attracts a small, but competitive pool of candidates, the acceptance rate is higher than at Regular Decision. Early Decision allows you to demonstrate your commitment to enroll at Boston College. It also enhances our ability to enroll students interested in the Jesuit, Catholic approach to education, personal growth, and service of others.



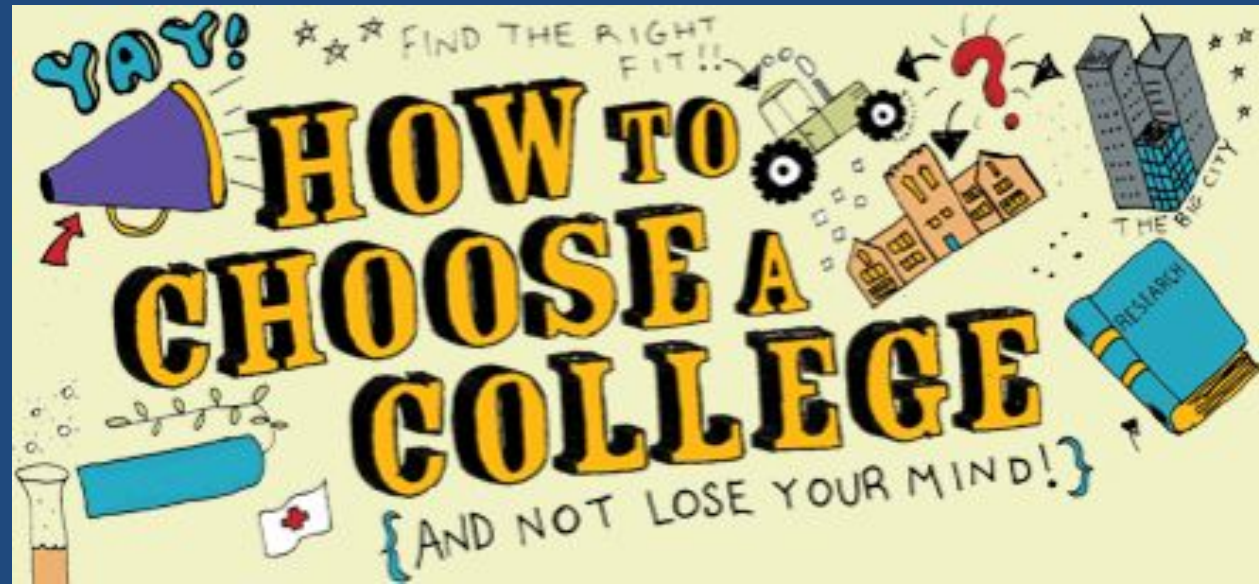
# Institutional Priorities





# The 5 P's: How to Choose a College

- Preference
- Place
- Program
- People
- Price



# Preference

Size



Academic Fit



Activities



Athletics





# Place

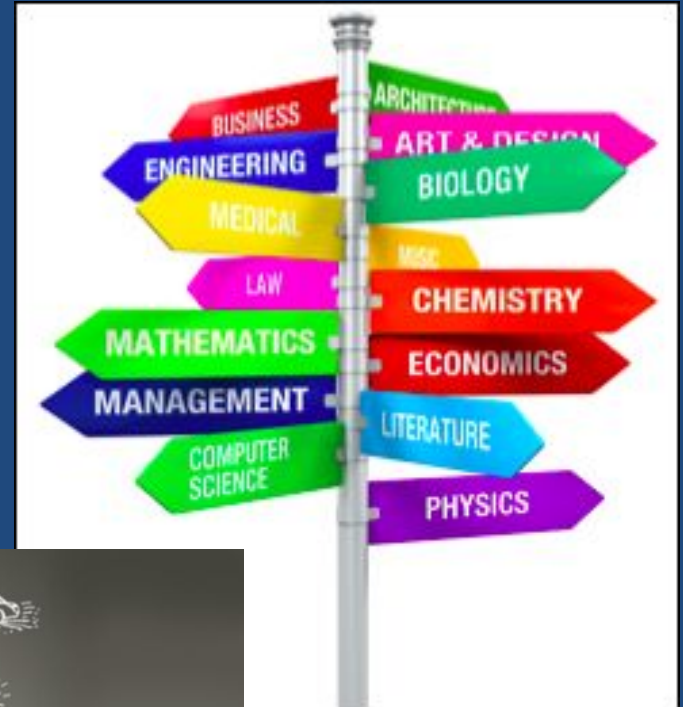
- Have a Family Discussion about Location
- In-state vs. Out-of-state, commuting vs. living on campus
- Urban, Suburban, Rural





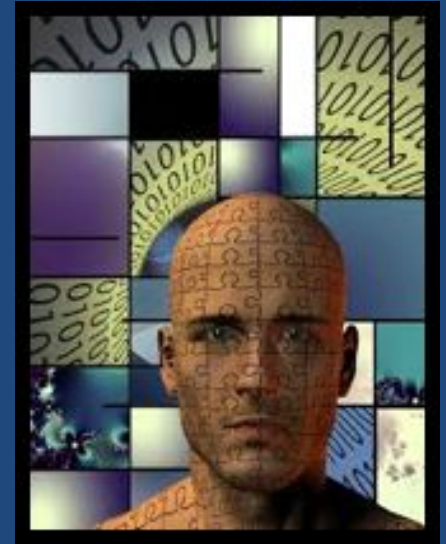
# Program

Common Question:  
What do you want to major  
in?



# Specialty Programs

Saint Louis University Medical Scholars  
Program



Union College eight year  
Medical Program with  
Albany Medical College

# Honors Programs



**Barrett  
The Honors  
College**

**Arizona State  
University**







# Graduate Outcomes

2017-2018

## Medical/Dental/Veterinary

University of California, San Francisco  
University of Michigan  
University of Arizona  
University of California Davis DVM  
Cornell University DVM  
Colorado State University DVM  
University of Pennsylvania DVM  
Harvard University DMD  
University of Colorado DDS  
University of Southern California DDS

## Law

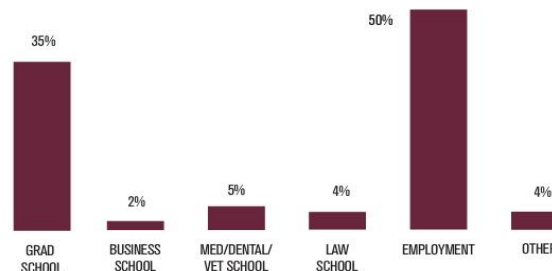
New York University  
Duke University  
Cornell University  
Georgetown University  
University of Texas, Austin  
Washington University  
University of Southern California  
Emory University  
Arizona State University  
University of Alabama

## Graduate Programs

PhD in Biomedical Engineering at Johns Hopkins University  
PhD in Genetics at Stanford University  
PhD in Biology at Massachusetts Institute of Technology  
PhD in Immunology at Columbia University  
PhD in Political Science at University of Iowa  
PhD in Pharmacology at Cambridge University  
PhD in Bioengineering at Duke University  
PhD in Computer Science at University of Virginia  
PhD in Physics at University of California, San Diego  
PhD in Bioinformatics at University of California, San Francisco  
PhD in Chemical Oceanography at MIT/Woods Hole Oceanographic Institution  
PhD in Structural Engineering at Arizona State University  
MBA at Harvard University  
MBA at Stanford University  
MS in International Relations & Politics at University of Cambridge  
MS in Science of Healthcare Delivery at Arizona State University  
MCS in Computer Science Big Data Systems at Arizona State University  
MS in Education at Northwestern University  
MS in Media Arts & Sciences at Massachusetts Institute of Technology  
MS in Aeronautics & Astronautics at Stanford University  
MA in English at Arizona State University  
MPA in Public Finance at Arizona State University  
MPH in Public Health at Columbia University  
MED in Higher Education Administration at Pennsylvania State University  
MMP in French Horn at University of Texas, Austin  
MPP in Public Programs at George Washington University  
MM in Music Performance at Boston Conservatory at Berklee  
MA in Global Affairs & Management at Arizona State University  
MA in Classical Archaeology at Brandeis University  
MA in Sustainability at Arizona State University  
International Financial Law at London School of Economics  
MTax in Taxation at Arizona State University

All lists are representative samples from this graduating class  
barretthonors.asu.edu/alumni

**ASU Barrett**  
The Honors College  
Arizona State University



## National Scholarships Awarded Spring 2018

2 NSEP BOREN	1 TRUMAN	1 GATES-CAMBRIDGE
21 FULBRIGHT	1 UDALL	3 FULBRIGHT SUMMER UK
1 MARSHALL	2 KILLAM	2 GOLDWATER

## Employment

Industrial Engineer for The Walt Disney Company in Anaheim, CA  
Registered Nurse at the Mayo Clinic in Scottsdale, AZ  
Software Development Engineer at Amazon in Seattle, WA  
Credit Risk Analyst at Goldman Sachs in New York City, NY  
Research Fellow at Babbitt Center for Land & Water Policy in Phoenix, AZ  
Economics Teacher at Great China International in Chengdu, China  
Real Estate Accountant at CBRE in Phoenix, AZ  
2nd Lieutenant in the United States Marine Corps  
Mechanical Engineer at Microsoft in Seattle, WA  
Procurement Analyst for Apple in Cupertino, CA  
Founder of United Safety Technologies, LLC in Glendale, AZ  
Behavioral Therapist at AFT Autism in Paris, France  
Sponsorship Associate at US Green Building Council in Washington, D.C.  
Aerospace Vehicle Designer & Mission Analyst at NASA Johnson Space Center in Houston, TX  
Publicity Coordinator at LAVIDGE in Phoenix, AZ  
Supply Chain Analyst at Intel in Chandler, AZ  
Executive Coordinator for Oxbridge Study Abroad Programs in New York City, NY  
Senior Video Producer at The Arizona Republic in Phoenix, AZ  
Sales Management Associate at PepsiCo Inc. in Portland, OR  
Project Engineer at JE Dunn Construction in Tampa, FL  
Leadership Consultant at Sigma Kappa Sorority in Carmel, IN  
Landscape Designer at Waibel & Associates Landscape Architecture, LLC in Tempe, AZ  
Reporter at Colorado Springs Independent in Colorado Springs, CO  
Assistant Language Teacher at Himeji Department of Education in Himeji, Japan  
Asset Manager at The Boeing Company in Mesa, AZ  
Copyright & Content Developer at BigFish Creative Group in Scottsdale, AZ  
Management Consultant at PricewaterhouseCoopers in San Francisco, CA  
Software Engineer at Raytheon in El Segundo, CA  
Investment Banking Analyst at Goldman Sachs in Salt Lake City, UT  
Supply Chain Analyst at Frito-Lay in Dallas, TX  
Software Engineer at American Express in Phoenix, AZ  
Math Teacher at Cesar Chavez High School in Laveen, AZ  
Financial Analyst at Aetna in Hartford, CT  
Account Manager at Procter & Gamble in Los Angeles, CA

# People

## Cultural and Geographic Diversity





# Price

Net Price Calculator/FAFSA Estimator

FAFSA: October 1 of Senior Year

CSS Profile





## 2016-2017 Confirmation Page



Your confirmation page has been sent to you at the e-mail address: abc@fsa.gov

[PRINT THIS PAGE](#)

**Confirmation Number:** F 08100051803 11/16/2015 16:22:09

**Data Release Number (DRN):** 3007

**Congratulations, Dependent !** Your FAFSA was successfully submitted to Federal Student Aid.



**Does your brother or sister need to complete a FAFSA?** If so, you can [transfer your parents' information into a new FAFSA](#) for your brother or sister to save time. Your parents will have to provide a signature again, but that's all.



### What Happens Next

- You will receive an e-mail version of this page.
- In 3-5 business days, you will receive an e-mail notifying you that your FAFSA was processed.
- Your FAFSA information will be made available to your school(s), and they will use it to determine the aid you may be eligible to receive.
- Your school(s) will contact you if they need more information or when they are ready to discuss your financial aid award.
- If you have questions about your financial aid package, contact your school(s).

School(s) on your FAFSA:

School Name	<a href="#">Graduation Rate</a>	<a href="#">Retention Rate</a>	<a href="#">Transfer Rate</a>	<a href="#">Additional Information from College Navigator</a>
UNIV OF ILLINOIS AT CHICAGO	60%	80%	NA	NA
ALABAMA AGRCLTL & MECHL UNIV	35%	66%	NA	NA
UNIVERSITY OF IOWA	70%	86%	24%	NA
UNIV OF ILLINOIS @ URBANA-CHAMPAIGN	84%	93%	NA	NA



### Eligibility Information

**Estimated Expected Family Contribution (EFC)** = 002516

The EFC is a measure of how much you can contribute to the cost of your education. Schools use your EFC to determine your federal student aid eligibility.

The EFC is not how much aid you will receive or how much

Based on the [eligibility criteria](#), you may be eligible for the following:

[Pell Grant](#) Estimate - \$3,225.00

[Direct Stafford Loan](#) Estimate - \$5,500.00

You may also be eligible to receive other federal, state, or institutional grants, scholarships, and/or

# Merit Scholarships

Moderately competitive schools will offer what is called merit scholarships for every student that fits certain criteria (GPA and test score).

Highly selective colleges will only offer a few scholarships based on merit, but many meet 100% of need based on FAFSA and CSS Profile.

[illegible]

# Sample Financial Aid Package

Drake University

Office of Student Financial Planning

Your Financial Aid Awards

Student Name  
Student ID#

December 3, 2018  
Student Copy

Below please find your financial aid awards for the 2018-19 academic year. **PLEASE REVIEW AND COMPLETE BOTH SIDES OF THIS AWARD NOTICE AND SIGN AND RETURN A COPY TO THE OFFICE OF STUDENT FINANCIAL PLANNING. IN ADDITION, BE CERTAIN THAT YOU READ AND RESPOND ACCORDINGLY TO ALL AWARD INSTRUCTIONS AND ACTIONS REQUESTED.**

**Step 1. Your Awards:** Please read messages below as indicated (several awards cannot be processed without additional action). Circle Accept or Decline ONLY where this message exists. Please read the instructions for any award marked by asterisk (\*, \*\*, \*\*\*, etc.) and complete all the steps as outlined in these instructions. For revisions following your initial award notice, the first message in Step 2 will indicate the basis for the revision.

Award Description	Summer 2018	Fall 2018	Spring 2019	Total	Messages/Action
Presidential Scholar (Tuition)		10,500.00	10,500.00	\$21,000.00	Accept/Decline
Trustee Scholarship (Tuition)		1,500.00	1,500.00	\$3,000.00	Accept/Decline
Fine Arts Scholarship Music		4,500.00	4,500.00	\$9,000.00	Accept/Decline
<b>TOTAL GRANTS AND SCHOLARSHIPS</b>				<b>\$33,000.00</b>	
Federal Direct Unsubsidized Ln		2,750.00	2,750.00	\$5,500.00	See **
<b>TOTAL FEDERAL STUDENT LOANS</b>				<b>\$5,500.00</b>	
Federal PLUS or Private Loan		7,655.00	7,655.00	\$15,310.00	See ***
<b>TOTAL OTHER LOAN ELIGIBILITY</b>				<b>\$15,310.00</b>	



# Graduating with Loans

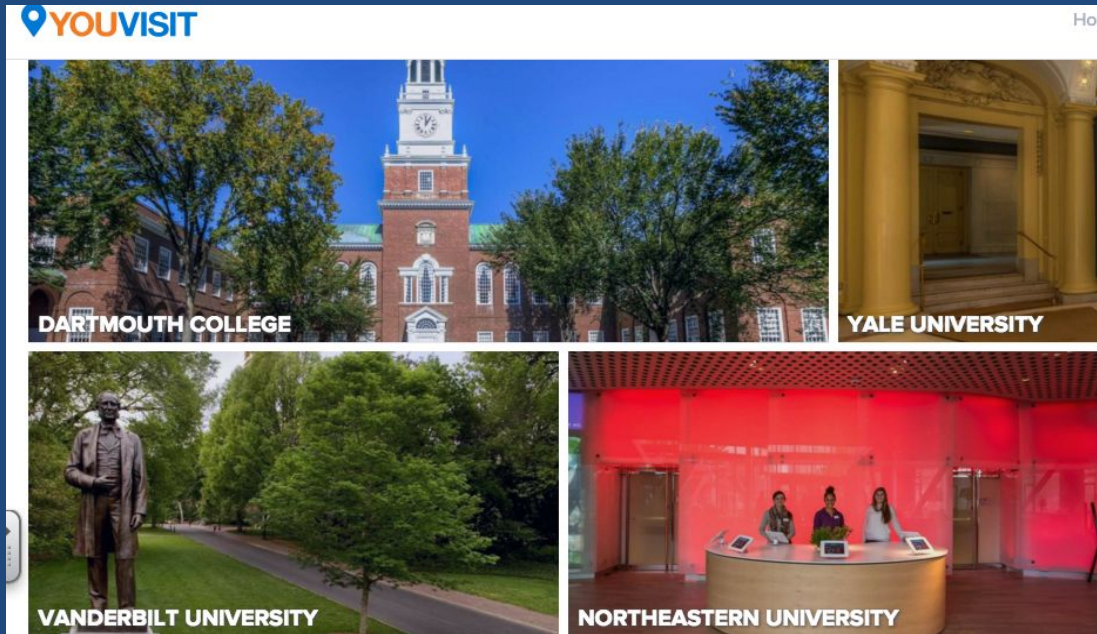


# Visiting College Campuses





# Virtual Tours



- college admissions websites
- youvisit.com
- campusreels.org

### San Diego State University

Thumbnail	Video Title	Category	Rating
	SDSU Bookstore	Academics	4.0
	Welcome to SDSU	Campus	4.0
	Zura floor and room details	Dorms	4.0
	In The Dorms Part 2	Dorms	4.5

[Want to see all videos and stats?](#)  
[View School Profile](#)

### University of Southern California

Thumbnail	Video Title	Category	Rating
	Welcome to USC-Introduction!	Interview	5.0
	On my way to Marshall School and Alumni House	Campus	5.0
	Walking on campus	Campus	5.0
	Dorms	Dorms	5.0

[Want to see all videos and stats?](#)  
[View School Profile](#)



# Campus Visit – Getting Started

- **Large public** – University of Illinois, Northern Illinois
- **Small private** – Lake Forest College, North Central College
- **Urban Setting** – University of Illinois at Chicago, DePaul University
- **Midsize Suburban** – Northwestern University, Bradley University



# Campus Visits

## Why?

- Campus style
- Student body
- Academics
- Social life

## When?

- During the school year
- Campus visit program days
- Spring Break or Summer



**CAMPUS VISIT**

# Campus Visits

## Who?

- Visit the Admission, Financial Aid and Placement offices
- Visit classes
- Speak to students other than the tour guide

## What?

- Facilities
- Dorm rooms
- Community
- Campus literature
- Transportation





# Special Visit Days and Special Virtual Info Sessions



## VISIT PROGRAMS

With the fall semester in full swing, students have multiple opportunities to come see SLU for themselves!

### Preview Days

**Oct. 6, Oct. 14 and Nov. 11**

This event gives students the opportunity to introduce themselves to faculty, staff and current students. It also includes:

- Presentations on the application and admission process and financial aid
- Panel discussion with current students
- Academic and information fair
- One-on-one with admission counselor
- Special presentation about studying Pre-Medicine at SLU
- Walking tour and a tour of our residence halls

*Special business, engineering and aviation options are available on Oct. 6 Preview Day.*

[Apply](#)  
[Visit](#)  
[Majors](#)  
[SLU.edu](#)

## DATES AND DEADLINES



Deadline for the [Presidential Scholarship](#) is **Dec.1.**



Deadline for the [Martin Luther King Jr. Scholarship](#) is **Feb.1.**



Many honors and scholars

# Narrow Your Search



# Application Management

[illegible]



# Start Early

High School Outcomes

Alumni Outcomes

YTD results

84%

Class Year

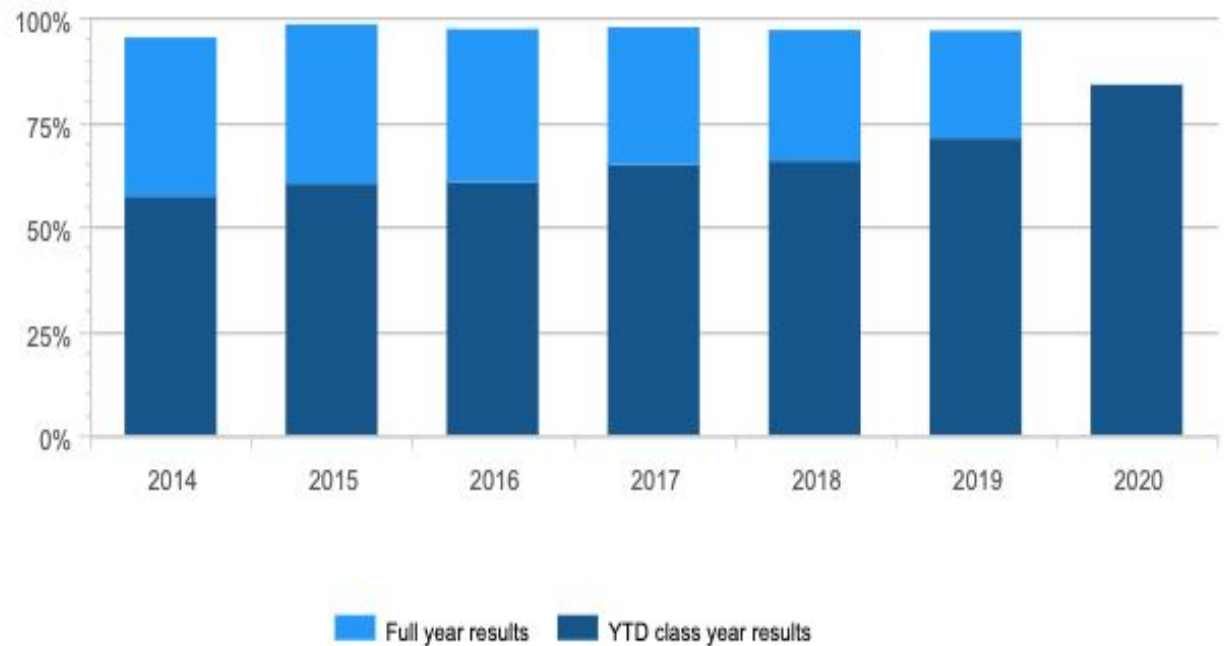
2020

Applied to 1+



 Analysis

Applied to at least 1 college



# Communicate



